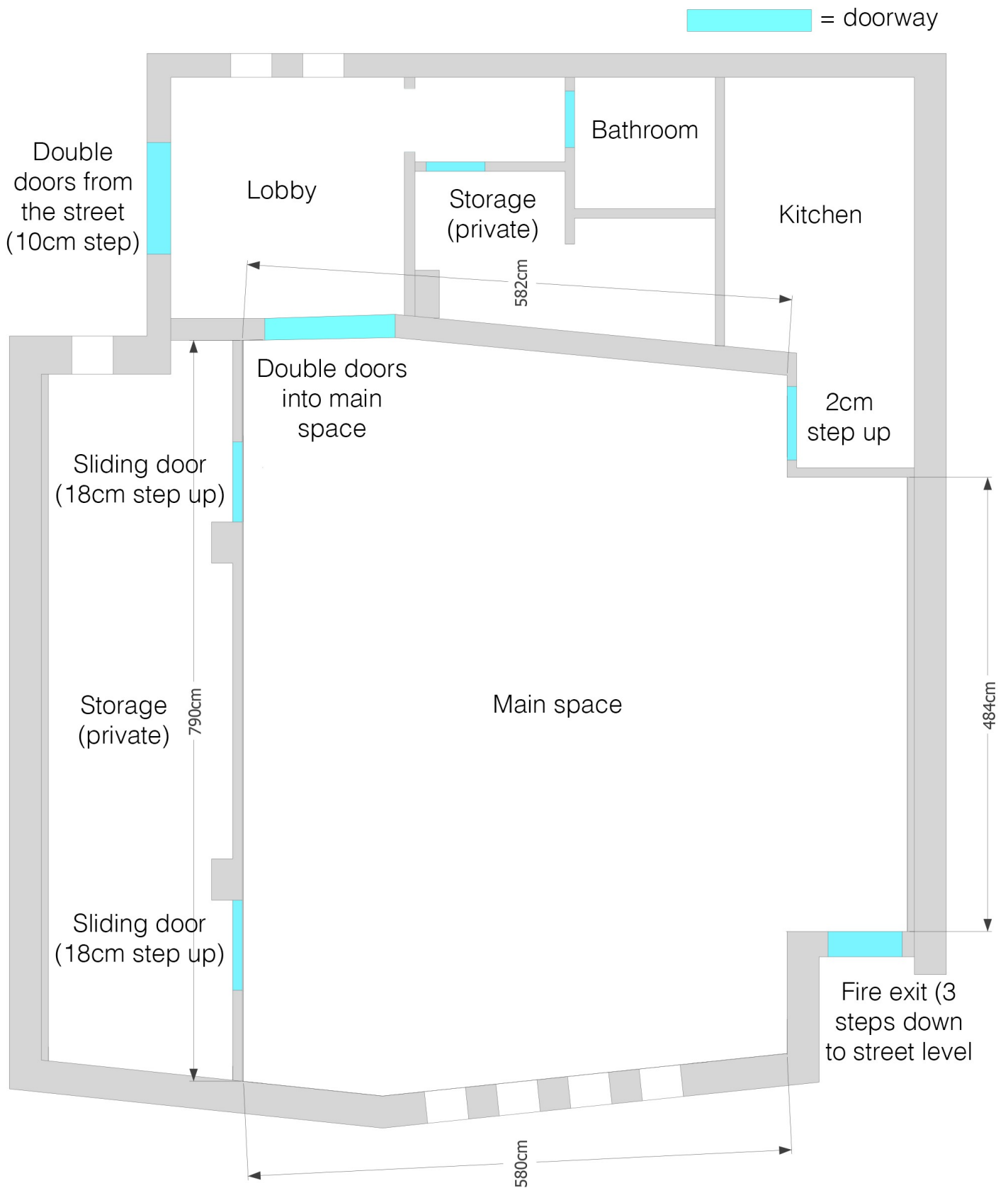


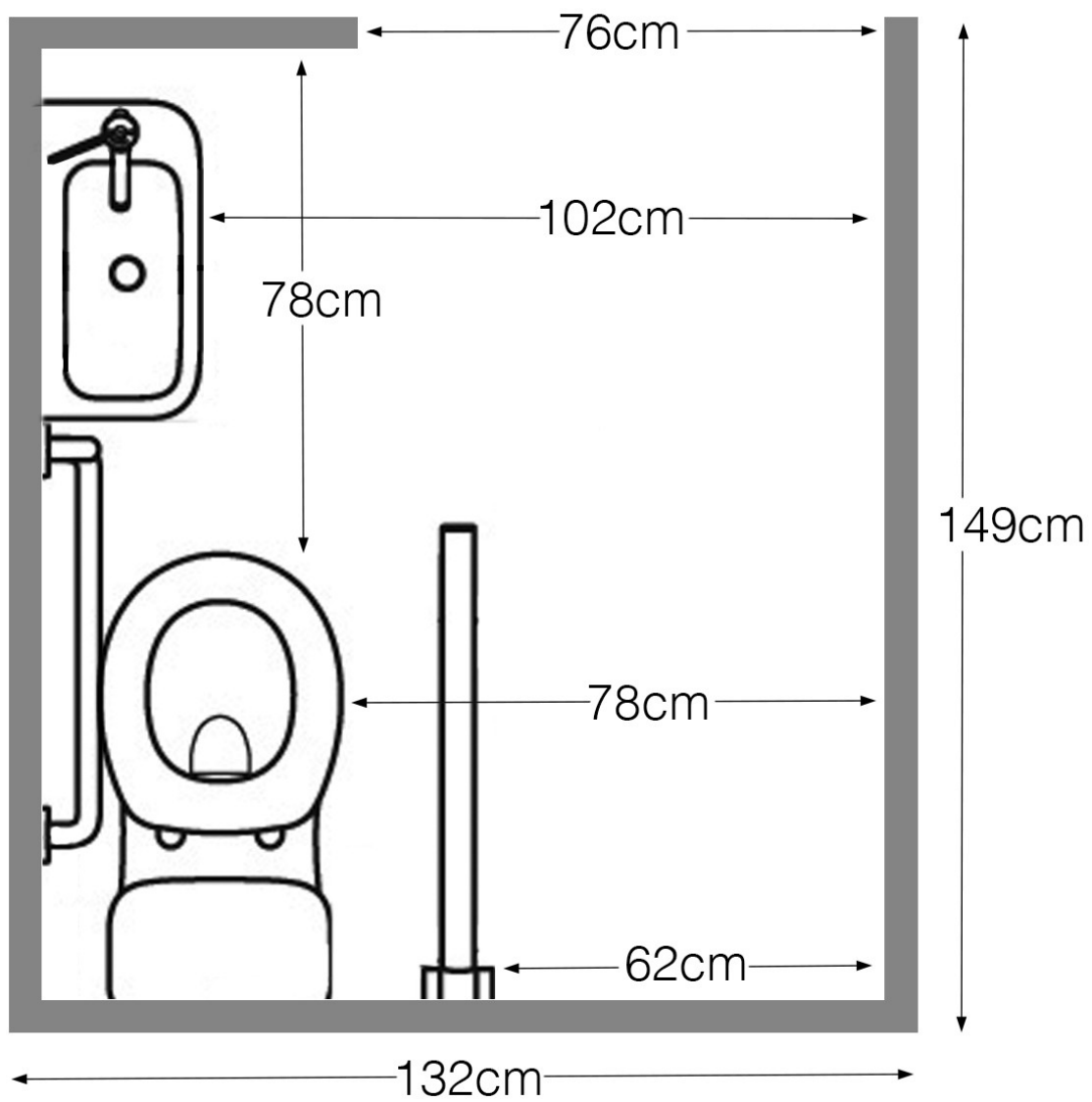
Accessibility at Kunstraum

Entrance to Kunstraum's lobby is via double doors at street level, with a 10cm step up. A portable ramp is available (76cm wide x 120cm length). The lobby is 265 x 267cm, with a set of double doors at right angle to the building entrance, leading into the main space. The kitchen, is up a 2cm step and has 68cm wide doorway. The fire escape has three steps down to street level.

Kunstraum's bathroom is not fully accessible due to the size of the space and its doorway but we have tried to make the space as accessible as possible. Please see the bathroom floorplan below for critical measurements and accompanying images.



– Kunstraum floorplan –



– Bathroom floorplan –



– Kunstraum street view –



– Kunstraum entrance –



– Lobby viewed from the street entrance, with bathroom to left of the image and double doors into the main space to the right of the image –



– Bathroom hallway viewed from the lobby –



– Bathroom viewed from the bathroom hallway –



– Bathroom hallway viewed from the bathroom –



– Main space viewed from the lobby entrance –



– Main space viewed from the fire exit –